

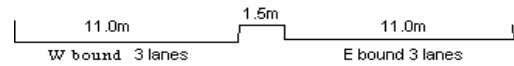
YEAR 2014

CORE STATION 5031

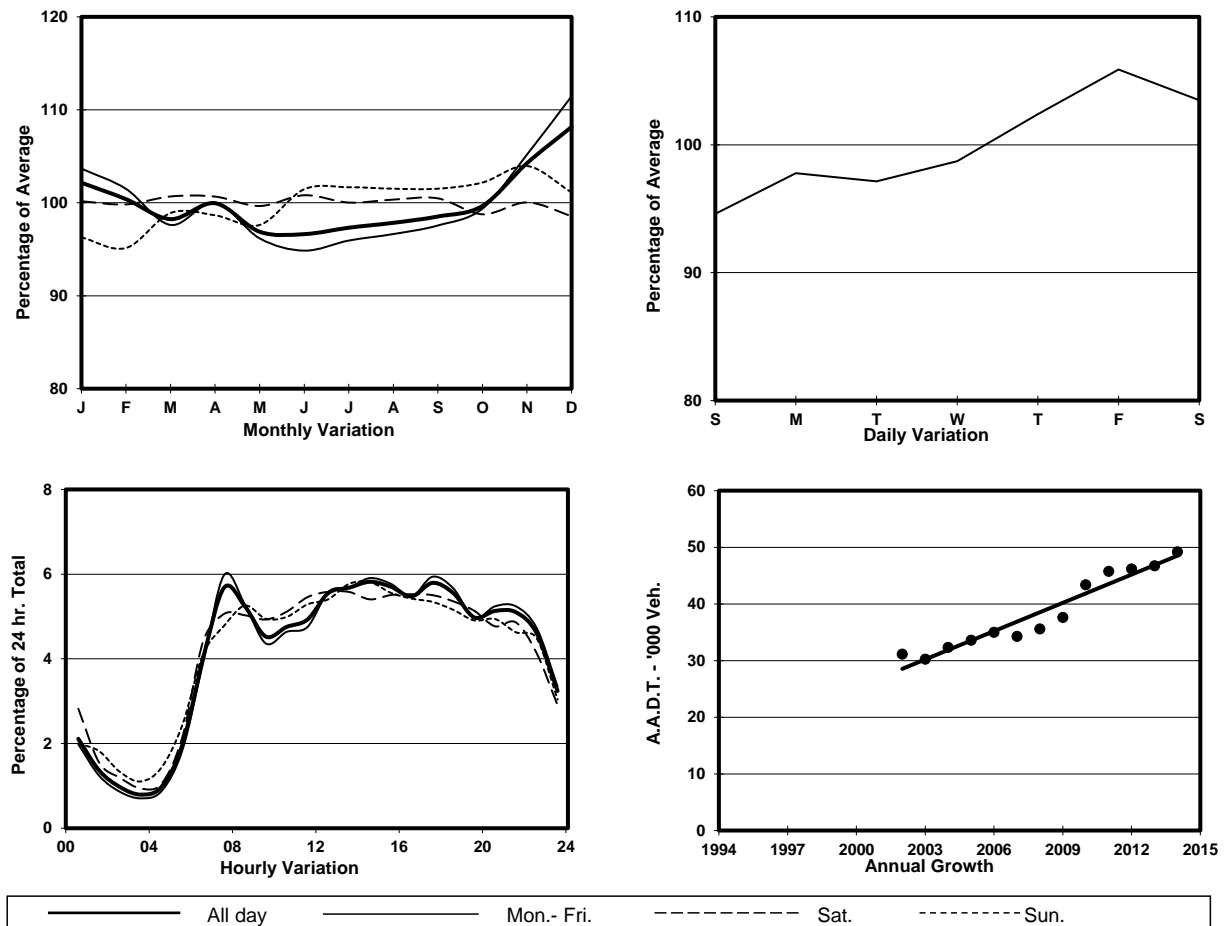
ROAD NETWORK MAJOR

ROAD TYPE EXPRESSWAY

LINK NORTH LANTAU HIGHWAY (from TUNG CHUNG
EASTERN INT to WESTERN END AT CHEK LAP KOK)



1. TRAFFIC FLOW VARIATION AND GROWTH



2. TRAFFIC CHARACTERISTICS (BY DIRECTION)

Parameter	All - Day	Mon. - Fri.	Sat.	Sun.
EAST BOUND				
A.A.D.T.	23940	23990	24890	23220
R 12 / 24 - %	62.6	63.2	61.8	60.2
R 16 / 24 - %	83.3	83.9	82.2	81.6
AM Peak Hour	0700-0800	0700-0800	0900-1000	0900-1000
One-way flow at AM peak hour	1070	1080	1210	1110
T - % (AM)	-	-	-	-
PM Peak Hour	1700-1800	1700-1800	1600-1700	1800-1900
One-way flow at PM peak hour	1490	1580	1370	1240
T - % (PM)	-	-	-	-
Prop.of commercial vehicles - 16 hr.	-	-	-	-
WEST BOUND				
A.A.D.T.	25260	25560	26190	23410
R 12 / 24 - %	66.8	66.8	66.2	67.3
R 16 / 24 - %	85.7	86.4	83.6	83.8
AM Peak Hour	0700-0800	0700-0800	0700-0800	0800-0900
One-way flow at AM peak hour	1730	1890	1440	1360
T - % (AM)	-	-	-	-
PM Peak Hour	1700-1800	1700-1800	1700-1800	1600-1700
One-way flow at PM peak hour	1360	1360	1460	1350
T - % (PM)	-	-	-	-
Prop.of commercial vehicles - 16 hr.	-	-	-	-

3. OTHER INFORMATION AND COMMENT